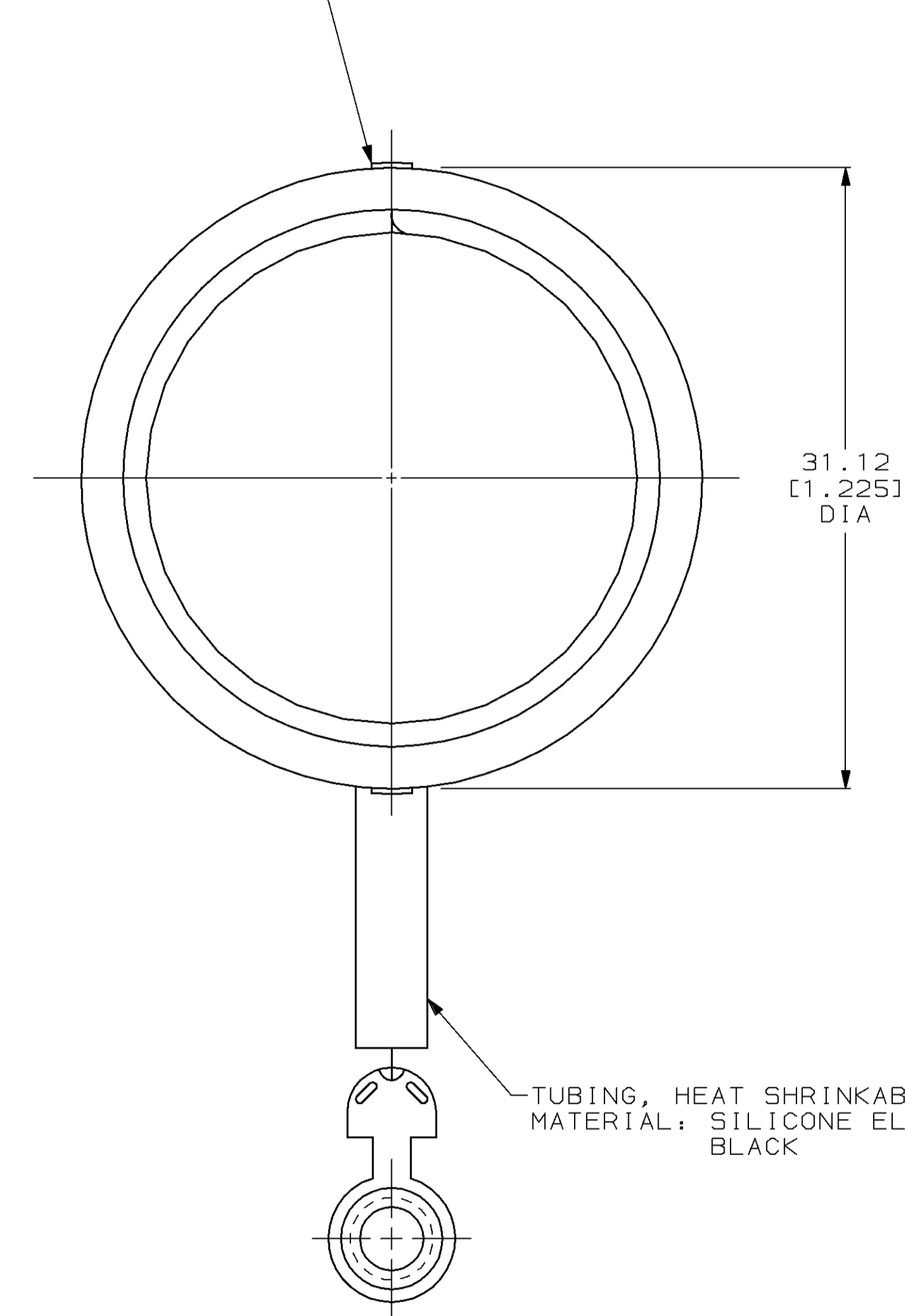


THIS DRAWING IS UNPUBLISHED. RELEASED FOR PUBLICATION  
 BY AMP INCORPORATED. ALL RIGHTS RESERVED.

Loc	DIST	REVISIONS					
		P	LTR	DESCRIPTION	DATE	DWN	APVD
BD	35						
		0		RLSE PER NPR 5273 WAS 94-4955-003	01/20/95	-	-
		A		REV PER EC 0020-363-95	04/20/95	DH	AF
		B		ADDED -2 PER EC 0020-606-95	06/09/95	DH	AF

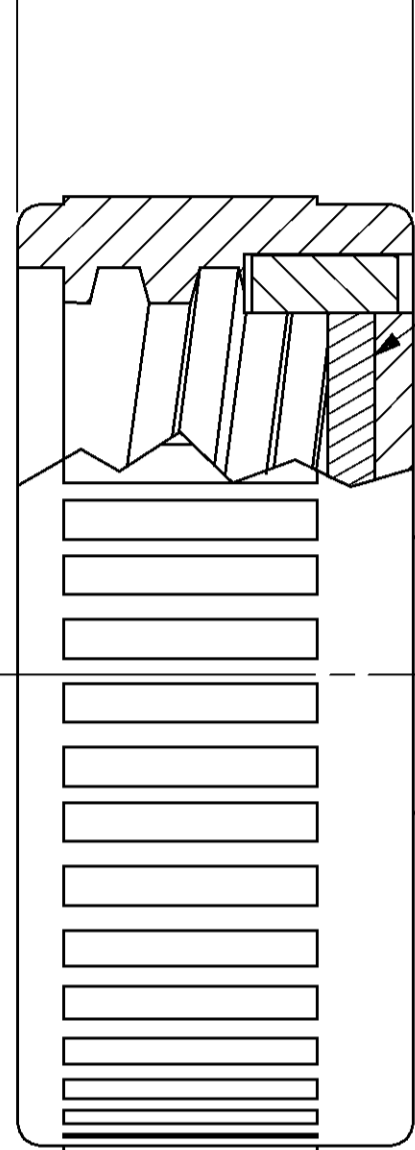
RAISED INDICATOR  
ARROW



31.12  
[1.225]  
DIA

TUBING, HEAT SHRINKABLE: SEE TABLE  
MATERIAL: SILICONE ELASTOMER,  
BLACK

13.08  
[.515]

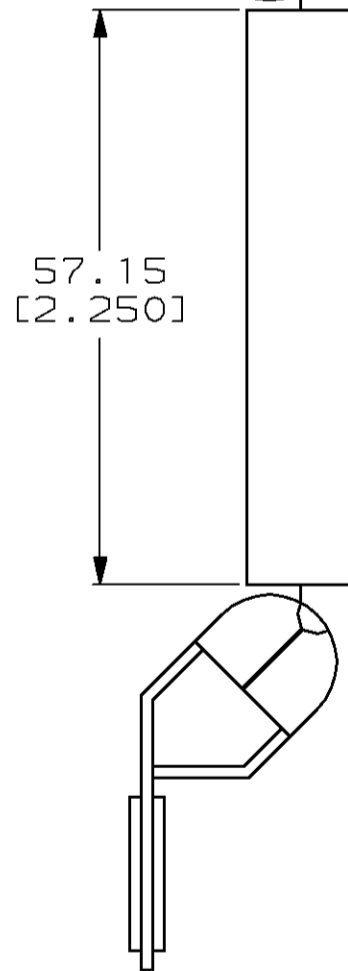


9.14 MAX  
[.360]

SEALING GASKET  
MATERIAL: ELASTOMER, BLACK  
1.57 [.062] THK

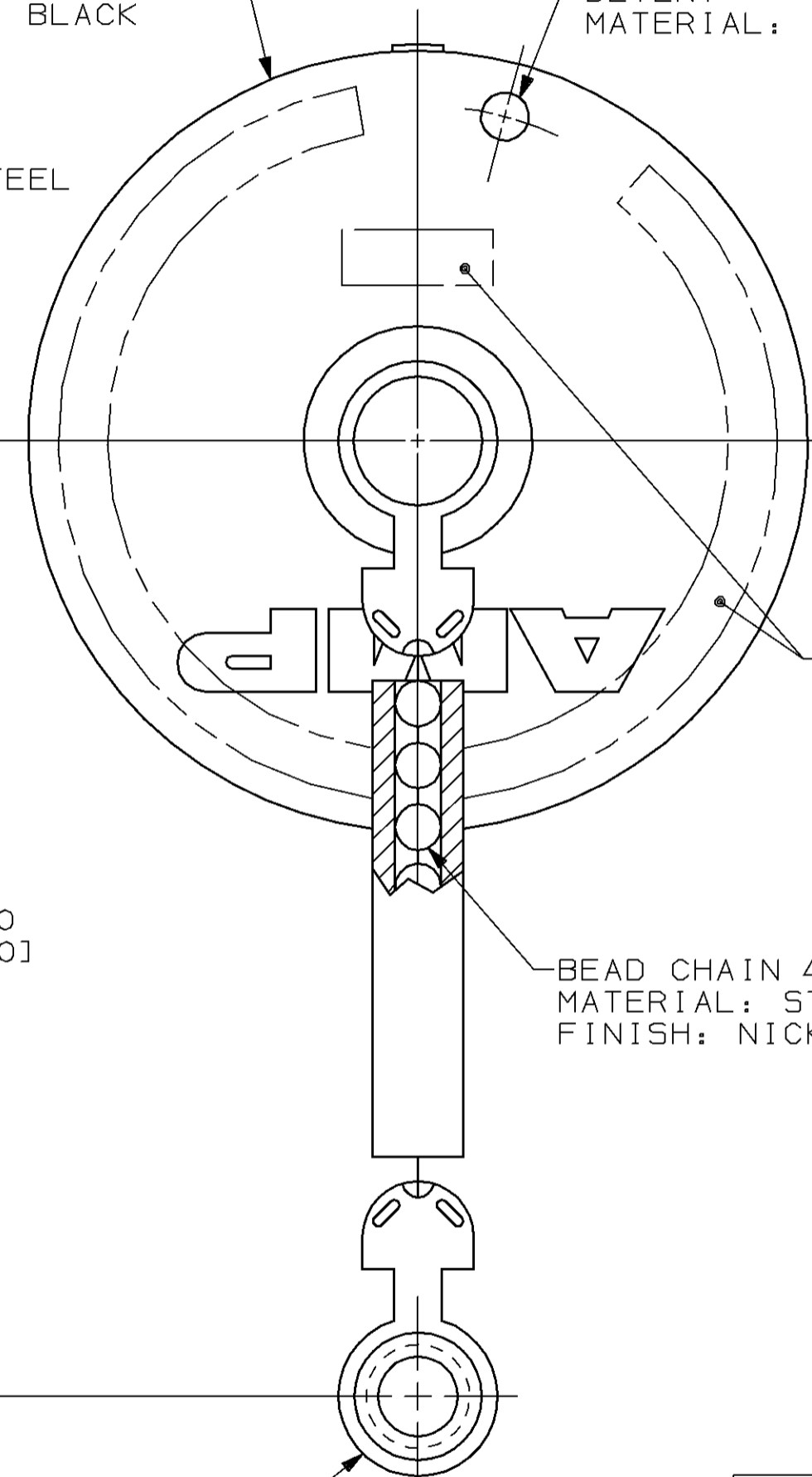
DRIVE STUD  
MATERIAL: CARBON STEEL  
FINISH: NICKEL PER  
QQ-N-290

57.15  
[2.250]



PROTECTIVE CAP  
MATERIAL: ZINC PER QQ-Z-363  
FINISH: 10.16µm [.000400] MIN NICKEL  
PER QQ-N-290 OVER 10.16µm [.000400]  
MIN COPPER PER MIL-C-14550

DETENT  
MATERIAL: THERMOPLASTIC, BLACK



AMP, PART NO & DATE  
CODE STAMPED IN  
ANY OF THESE AREAS.

BEAD CHAIN <sup>1</sup>  
MATERIAL: STEEL  
FINISH: NICKEL PER QQ-N-290

COUPLING BOTH ENDS  
MATERIAL: BRASS  
FINISH: NICKEL PER  
QQ-N-290

76.20  
[3.000]

<sup>1</sup> BEADED PORTION OF CHAIN MUST ROTATE FREELY. THE EYELET OF  
THE CHAIN IS NOT REQUIRED TO SPIN FREELY AROUND THE STUD.

NO	213823-2
YES	213823-1
TUBING	PART NUMBER

THIS DRAWING IS A CONTROLLED DOCUMENT FOR AMP INCORPORATED. IT IS SUBJECT TO CHANGE AND THE CONTROLLING ENGINEERING ORGANIZATION SHOULD BE CONTACTED FOR THE LATEST REVISION.		DWN K.FOLTZ 01/20/95	AMP Incorporated Harrisburg, PA 17105-3608	
DIMENSIONS: mm [INCHES]		CHK R.STONE 01/20/95	NAME	
TOLERANCES UNLESS OTHERWISE SPECIFIED:		APVD A.FRANTUM 01/23/95	PRODUCT SPEC	
0 PLC ±-		APPLICATION SPEC		
1 PLC ±-		WEIGHT		
2 PLC ±0.25 [.010]		SCALE		
3 PLC ±-		SHEET		
4 PLC ±-		REV		
ANGLES ±-		CUSTOMER DRAWING		
FINISH		DRAWING NO		
SEE CALLOUTS		A2 00779 C-213823		
SEE CALLOUTS		SCALE 4:1 SHEET 1 OF 1 REV B		